

LESSER SLAVE WATERSHED COUNCIL

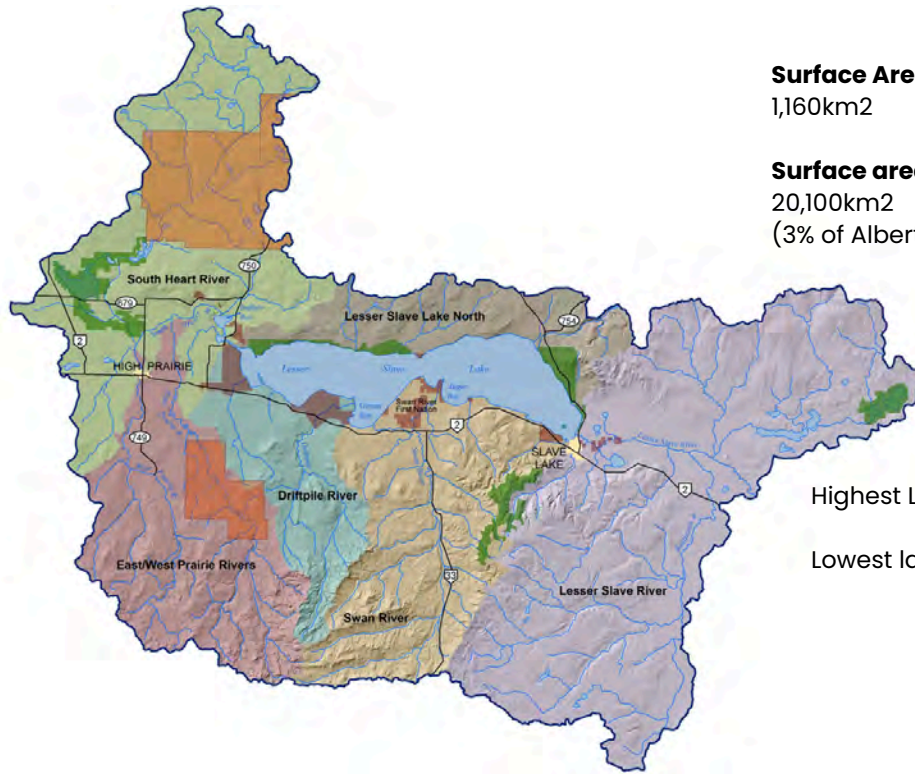
# 2023/24 ANNUAL REPORT

April 1, 2023 - March 31, 2024



PREPARED BY  
Meghan Payne, LSWC Executive Director

# THE LESSER SLAVE WATERSHED COUNCIL



**Surface Area of LSL:**

1,160km<sup>2</sup>

**Surface area of the LS watershed:**

20,100km<sup>2</sup>  
(3% of Alberta's land base)

**Highest annual flows to LSL contributed by:**

The Swan River

Highest Lake level on record:

Lowest lake level on record:

**Vision**

A healthy, resilient watershed that is valued and stewarded by engaged citizens and communities.

**Mission**

The Lesser Slave Watershed Council works to improve and maintain a healthy watershed through education, planning and implementation of shared initiatives in support of communities and ecosystems throughout the region.

**Goal**

A healthy Lesser Slave watershed.

**Strategies**

- Maintain good governance
- Be a convener and collaborator
- Lead or support watershed planning
- Lead or support watershed monitoring and reporting
- Promote education, literacy and stewardship

**ORGANIZATIONAL TIMELINE**

**1996**

A concerned group of citizens & stakeholders began meeting about lake sustainability.

**2006**

Registered as an Alberta Non Profit Society

**2007**

Designation as a Watershed Planning and Advisory Council

**2008**

Office established, Executive Director hired

**2010**

Registered Canadian charitable status obtained

# 2023/24 LSWC BOARD OF DIRECTORS



Jim Zabolotniuk  
Alt: Tyler Airth  
**Big Lakes County**

Norm Seatter  
Alt: Brad Pearson  
**M.D. of Lesser Slave River**

Andrew Achoba  
Alt: Ali Mouallem  
**Town of Slave Lake**

Kimberly Willier  
**Sucker Creek First Nation**

John Henry Giroux  
**Driftpile Cree Nation**

Nicole St. Jean (Chair)  
**Forest Sector**

Shane Knutson  
**Tourism & Economic  
Development**

Tammy Kaleta (Vice Chair)  
Alt: Ian Willier  
**Angling & Recreation**

Keith Denoncourt  
**Member at Large**

Jamie Bruha  
Alt: Arin MacFarlane-Dyer  
**Alberta Environment &  
Protected Areas**

Sacha Martens (Treasurer)  
Alt: Donna Deynaka  
**Town of High Prairie**

Kaine Giroux  
Alt: Todd Bailey  
**Swan River First Nation**

Lynn Smith  
**Peavine Metis Settlement**

Reva Jaycox  
**East Prairie Metis  
Settlement**

Grant Utas  
**Oil & Gas Sector**

Susan Nielsen  
Alt: Brad Mertz  
**Agriculture Sector**

Cori Klassen  
**Non Government  
Organizations**

Nona Elliott-Pratt  
**Cottagers & Country  
Residential**

*Board Vacancies: Kapaweno First Nation, Sawridge First Nation*

# MESSAGE FROM THE CHAIR

NICOLE ST. JEAN



It has been a busy and eventful past year in the Lesser Slave Watershed, with the 2023 fires and subsequent drought effecting us significantly. The current and predicted drought status throughout the province, reinforces just how critical the work of the Lesser Slave Watershed Council and all of Alberta's WPAC's is for the present and future of water in Alberta.

Riparian Area Intactness Assessments of Lesser Slave Lake, and the Swan River including the Moosehorn and Inverness Rivers were completed this past year. The resulting

data will be utilized by the LSWC, government and land managers to inform development and prioritize restoration work that supports health aquatic habitat.

2024 marks the 8th year of the Tributary Monitoring Program. The sampling of these 15 sites across the watershed was especially important last season with the low water levels. The Alberta Lake Management Society and the LSWC have partnered to complete Recreational Beach Sampling at s Devonshire and Marten Beach. This data will help track water quality trends in popular public used locations along the lake. The much anticipated Swan River State of the Watershed plan is in the final stages of development with recent workshop presentations and the completed report is scheduled for September. The Education and Outreach in the community is fully booked for the rest of the school year and the summer. This year's LSWC Outreach Technicians are likely out in the field right now, literally, and figuratively, immersing students in various watershed activities. The upcoming year is full of exciting things - like educational media project, the summer and winter Kids Can Catch events, the addition of CABIN invertebrate sampling in the watershed and sampling for Aquatic Invasive, just to name a few.

A huge thank you to our Executive Director, Meghan Payne, her ability to balance so many research projects, stakeholder engagements, outreach and education is impressive, and her leadership is a vital asset to the LSWC and the greater watershed itself. Secondly thank you to Kate Lovsin, past Watershed Coordinator, for all her work in the office and field over the past few years, I wish her the best in her future endeavors. Thank you to the Directors and Board Members for all their time, expertise, energy, and support for the LSWC and advocating for a healthy and sustainable through their organizations and networks.

Keep up to date with the "Eyes on Slave Lake," live cams and follow the LSWC social media accounts for events and programming, and to be involved with the LSWC to make a positive impact on the watershed.

# MESSAGE FROM THE VICE CHAIR

TAMMY KALETA



I've been an LSWC Director for over 10 years representing Angling & Recreation. Over the years, I've witnessed the sheer amount of positive energy and effort that goes into the LSWC's projects and programs. I have been involved projects like the development of the Integrated Watershed management plan, establishing lake and tributary water monitoring programs, and many educational programs and events like the annual "Kids Can Catch" Family Day ice fishing event in Jousard. In 2024, we are working on video project with Wes David of

"Fishing the Wild West", coined "Releasing for the Future" aims to positively influence angler behavior to ensure fish are handled and released quickly, safely and effectively, thus enabling populations to become more sustainable into the future. Stay tuned for its release! I'd like to thank the LSWC Board for their support in pursuing this very important educational piece that will promote best practices among anglers in our watershed and beyond.

# FROM THE EXECUTIVE DIRECTOR

Meghan Payne, BSc., MEERL



As I reflect on on the 2023-24 operational year and compile all of all of our achievements for this annual report, I am impressed at just how much a small organization with just two staff can accomplish. The past year was packed with events, field work, presentations, field trips, and project work. One of the highlights of my year was the 2023 WPAC Summit, held in Drumheller, AB. It is one of the only opportunities where Directors from the 11 WPAC's have an opportunity to meet each other and learn about the diversity of Alberta's watersheds and the range of program and activities being

delivered across Alberta. The scenery and the Royal Tyrell Museum visit were an excellent showcase of the Red Deer River watershed.

WPAC's responded to drought in 2023 by delivering a series of Drought Resiliency workshops for municipal partners and community water managers. These workshops were organized quickly, collaboratively and with no additional financial support, highlighting the ability of Alberta WPAC's to respond and deliver important information to our partners.

As always, I am appreciative of the time and dedication that the LSWC Directors give to the organization. They are volunteers, with busy schedules, but their commitment to the our goals and the watershed does not go un noticed.

# SUMMARY OF ACHIEVEMENTS

## Good Governance

- 18 of 20 Director seats filled
- 5 board meetings held in person, online, and hybrid
- Annual General Meeting held online on June 22, 2023.
- Society and Charitable Annual returns filed.
- HR and legal review of LSWC staff documents completed.
- Staff professional development: ARC GIS training, CABIN Field training, 4 Seasons of Indigenous Knowledge: Season One,

## Convene and Collaborate

- Staff participated in Alberta WPAC collaborative meetings through the year.
- Swan River Watershed Initiative stakeholder online meeting held.
- Presentations delivered at Slave Lake and High Prairie Forest Advisory Committee meetings
- Partnered with MDLSR to host a Watershed Resiliency workshop in Flatbush, AB
- Co Hosted “Building Resiliency to Multiyear Drought” workshops with WPAC partners in Grande Prairie and Athabasca.
- Management and delivery of Big Lakes County ALUS Program.
- Initiated 7 new Watershed Resiliency projects, met with 7 interested landowners to explore partnerships and support grant applications to provincial programs, and staff supported the completion of 8 Environmental Farm Plans

- Participated in the Eastern Slopes Collaborative to build capacity for benthic invertebrate monitoring.
- Contributor to and supporter of the Alberta Riparian Web Portal
- WPACs co-hosted the 3rd Annual World Water Day webinar with ~82 people in attendance
- 2 staff and 2 directors attended the Alberta Lake Management Society's annual conference in Sylvan Lake, AB
- 2 staff and 4 directors attended the 2024 Alberta WPAC Summit in Drumheller, AB

## Watershed Planning

- Provided drought and landuse planning resources to municipal partners
- Continued implementation actions from the Integrated Watershed Management Plan - captured in the reporting of other program areas,



# SUMMARY OF ACHIEVEMENTS

## Monitoring and Reporting

- Monitored 15 tributary sites 9 times between April and October
- Collected water quality samples at 4 locations on Lesser Slave Lake in late August.
- Collected Winter Lake Keepers under ice samples at Jousard and Canyon Creek in January and February
- Collected aquatic invasive species samples at 5 locations on Lesser Slave Lake and 2 on Fawcett Lake in July and August 2023 in partnership with the Government of Alberta
- 2017-2023 water quality data hosted on Mackenzie DataStream.
- Distributed Lesser Slave Lake "Lakewatch" reports
- Swan River Riparian Intactness Assessment completed by Fiera Biological
- Lesser Slave Lake Riparian Intactness Assessment completed by Fiera Biological
- Swan River State of the Watershed project collaboration and contract work continued through 2023/24



## Education, Literacy and Stewardship

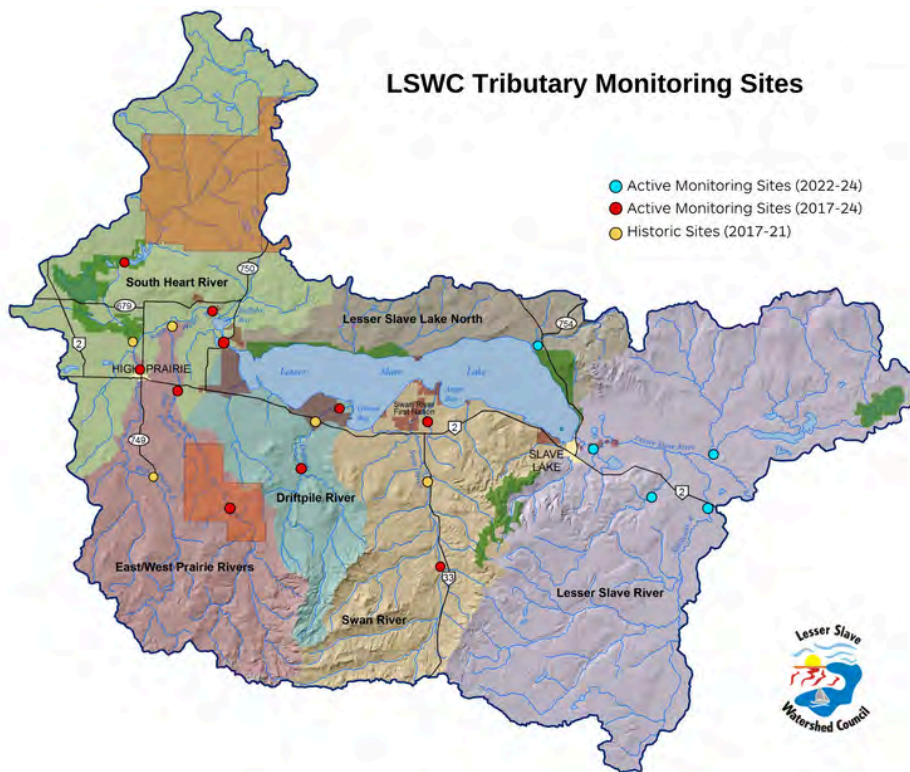
- Increased social media following across Facebook, Instagram, Twitter, YouTube, LinkedIn
- Watershed awareness campaign hosted via local radio
- 4 newsletters sent, 12 articles published in newspapers, 12 blog posts published.
- Delivered the Little Green Thumbs program in 14 classrooms
- Hosted Kids Can Catch events in Jousard, Ab and at Winagami Lake
- Elliott & Rosche Memorial Bursary awarded to Ayla Giroux.
- Distributed LSL Stewardship Handbooks, invasive species resources, Green Acreage primers,
- Engaged with recreational lake users at summer 'pop-ups' and distributed resources
- Delivered Watershed Wise, Watershed in a Bowl, Marsh Monsters, X-stream Science, and water quality presentations in classrooms across the watershed
- Delivered the X-Stream Science program 8 times.
- Participated in the High Prairie Municipal Library's summer reading program.
- Brought together community members and partners for the 2nd SplashFest in High Prairie.
- Participated in the Songbird Festival and Forest Week at the Boreal Centre for Bird Conservation.

# WATERSHED MONITORING AND REPORTING

## 2023 Tributary Monitoring

The LSWC's tributary monitoring program continued for its 7th year in 2023. LSWC staff collected samples at 15 sites, nine times between April and October.

Monitoring data is made publicly available through the Mackenzie DataStream portal, where data can be viewed, compared, and downloaded for use. The LSWC publishes comprehensive water quality reports every five years and provides information to local governments and stakeholders.



### What are we measuring?

- Temperature
- Dissolved Oxygen
- Conductivity
- pH
- Suspended solids
- Dissolved solids
- Fecal coliforms
- Nutrients - P & N
- Metals

These parameters are measured in the field or analyzed from bottles we ship to the Bureau Veritas laboratory in Edmonton, AB. The parameters were selected as they provide information about key water quality concerns like bacterial contamination, nutrient loading, sedimentation and erosion - AND they are affordable so that the program can continue on year after year.

Program support from:

**Vanderwell**  
Forest Resource Improvement Program

# WATERSHED MONITORING AND REPORTING

## Lake Monitoring & Collaborations



### Lake sampling - Lesser Slave Lake

The LSWC collects samples at a near shore and deep basin location on the East and West Basins during open water between June and October. Dissolved oxygen and temperature profiles are recorded at each site and samples are collected for: fecal coliform bacteria, chlorophyll-a, suspended solids, total and dissolved nutrients. This year, we only collected samples in August due to weather conditions and capacity challenges, but we did have an aspiring watershed scientist, Hadley Zahacy join us.

### Winter Lake Keepers

LSWC staff partnered with the Alberta Lake Management Society for the 3rd year of under ice sampling near Jossard and Canyon Creek. Samples were collected at the end of January and February 2024 but a 3rd sample was deemed unsafe due to warm weather at the end of March. The information collected supports a provincial lake water quality data base an academic research.



### Aquatic Invasive Species Monitoring

As a part of Albert's efforts to keep invasive Mussels out of our waterways, the LSWC supported Environment and Protected Areas Veliger monitoring efforts in our watershed. LSWC staff conducted sweep sampling at 5 marinas around Lesser Slave Lake and 2 on Fawcett Lake in July and August 2023. Samples were analyzed for the presence of Zebra and Quagga Mussel larva as well as Spiny Water Flea. None were detected.

# STATE OF THE WATERSHED: SWAN RIVER

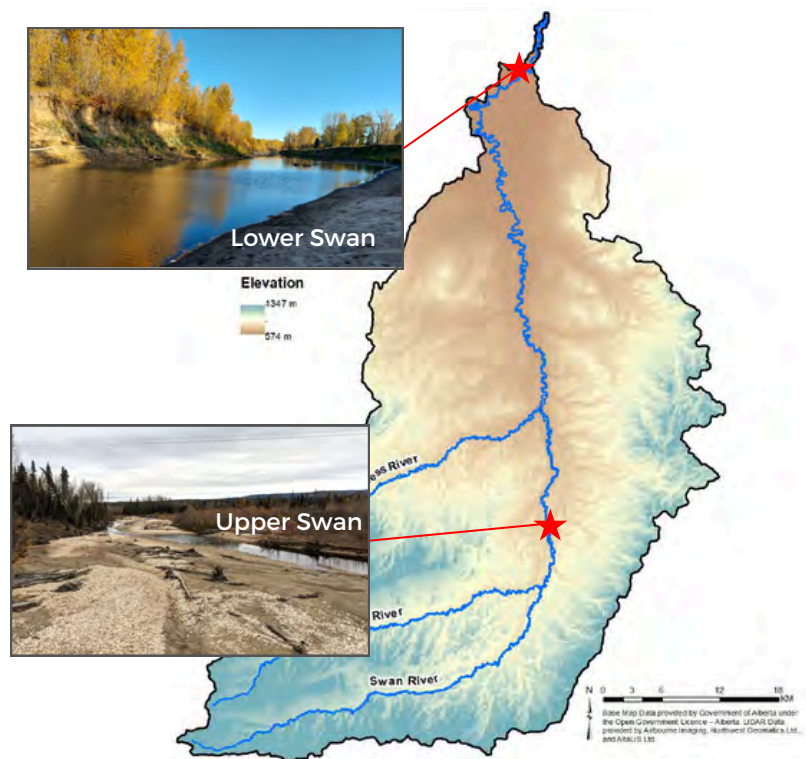
The Mandate and Roles agreement between Alberta WPAC's and Alberta Environment and Protected Areas identifies state of the watershed assessment and reporting as a key WPAC role. The LSWC works to evaluate the condition of the watershed using a variety of indicators and metrics informed by the best available science and then publish "State of the Watershed" reports that discuss conditions, pressures in the watershed, and identify data gaps that require further work.

The first LSWC State of the Watershed report was published in 2009 and identified many data gaps and monitoring needs. Since that time LSWC has been working collaboratively to fill data gaps through monitoring and assessment work.

Stemming from the momentum of the Swan River Watershed Initiative collaborative and a need to break up state of the watershed work into manageable pieces the LSWC prioritized the Swan Watershed the past year the LSWC has been working with Palliser Environmental Services on a State of the Swan River Watershed project. Swan River First Nation, forest companies, oil and gas operators, and staff from Environment and Protected Areas, Forestry and Parks, the Alberta Energy Regulator and others working in the watershed have been engaged throughout the process and have contributed discussion, knowledge and data to the project.

The Swan River has the highest elevation gradient in the watershed. The Upper reaches of the Swan River are in the foothills ecoregion with rocky stream bottoms and rapids. The Upper Swan and its smaller tributaries provide habitat for Arctic Grayling. The lower reaches are in the boreal eco zone where the wider channel has a sediment bottom and fish from Lesser Slave Lake make their way upstream to spawn.

The Swan watershed receives the highest annual precipitation in the watershed and contributes the most flow per year to Lesser Slave Lake.



The map above shows the elevation gradient change between the upper and lower reaches of the Swan with photos from LSWC tributary sampling sites.

# RIPARIAN INTACTNESS ASSESSMENTS

In 2023 the LSWC worked with Fiera Biological Consulting on two riparian intactness assessments via satellite imagery and GIS methods. One for the Swan River, Moosehorn and Inverness Rivers and one for the shoreline of Lesser Slave Lake. The only previous riparian assessment on Lesser Slave Lake was conducted with aerial videography flown in 2005 by the Alberta Conservation Association. Similarly, there was an aerial videography assessment of the Swan, Moosehorn and Inverness in 2010. One of the objectives of these studies was to quantify the changes seen over time.

Another objective for the LSWC is to share the information obtained through this work in order to support inform development and planning, and prioritize areas for conservation and restoration and promote riparian stewardship among lakeshore, acreage and agricultural landowners via the Watershed Resiliency program.



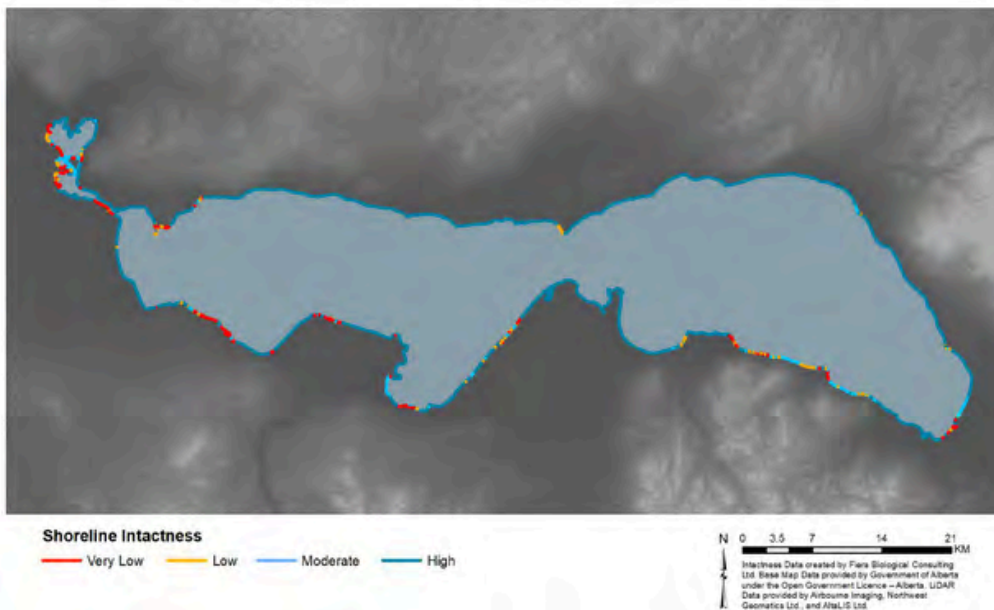
## Alberta Riparian Web Portal

The WPAC created Riparian Web Portal is a one stop shop for all things related to riparian health, assessments and stewardship. It features an interactive map displaying intactness data for rivers across the province. You can find assessments of the West Prairie, Swan, Moosehorn, Inverness Rivers and Lesser Slave Lake on the map.



Check it out at:  
[riparianresourcesab.info](http://riparianresourcesab.info)

## Lesser Slave Lake Shoreline Intactness Summary Map



*"The most notable changes in the condition since 2007 appear to be where major shoreline development has occurred along the south shore near Jousard, Faust, Canyon Creek, Widewater, and Wagner."*



Healthy riparian areas and wetland provide exponential benefits to the watershed through the many ecosystems goods and services they provide. The 2019 Integrated Watershed Management Plan prioritizes intact wetlands and riparian areas and the LSWC is working with partners to assess the condition of, and implement projects that improve health over time or conserve intact wetland and riparian areas.

Since 2016, the LSWC has been receiving support from the provincial Watershed Restoration and Resiliency program, as well as Big Lakes County to support landowners in implementing projects that build watershed resiliency. To date projects have included; riparian and wetland fencing, off stream solar watering systems, small stream crossings, a beaver pond leveler, and revegetation of degraded riparian area.

LSWC staff are certified Alberta Environmental Farm Plan technicians and in 2023 we worked with producers to get 9 EFP's completed and approved. Our Executive Director aided with 5 applications to the Sustainable Canadian Agricultural Partnership grant program in 2023 and early 2024. We commonly hear that the administrative support we provide is very helpful and makes navigating grant programs and requirements easier for landowners.

Funding  
provided by



**7 WATERSHED  
RESILIENCY PROJECTS  
INITIATED IN 2023**

**17 PROJECTS TO DATE**

**762.5 CONSERVATION  
OR RESTRIORION  
ACRES TO DATE**



The LSWC managed the ALUS program in Big Lakes throughout 2022-23, with our MOU ending in December and the program being handed off to BLC's ALUS Coordinator Shelley Henkel. In 2023, 5 of the 7 Watershed Resiliency projects initiated are also ALUS collaborations.

The ALUS program in Big Lakes has been supported to date via the Watershed Restoration and Resiliency grant program, with support from ALUS Canada starting in 2023.

# WATERSHED ENGAGEMENT

Engaging with people in the watershed is a major part of what the LSWC is all about. We want to help people understand watershed function and how our activities across the landscape can impact water quality and fish habitat so that individuals, land owners, businesses and governments can consider watershed health in their every day lives.

1,103

Students reached through classroom presentations and field trips

12

Articles by LSWC staff published in local newspapers

2,429

Engagements at community events

497

Newsletter Subscribers

12

Watershed blogs published online

## Eyes on Lesser Slave Live Cameras

People around the globe can enjoy live views from the shores of Lesser Slave Lake at Jousard, AB and Widewater AB.

Our live cameras give folks a view of weather conditions, waves and visibility to help them decide if they want to get out on the lake.

Check them out using the QR codes below.



Jousard



Widewater

## Social Media Statistics



877 Likes  
1,000 Followers



993 Followers



479 followers  
Reach 2,600



155 Followers



71 Subscribers  
2,651 "Views"



786 Google Searches



# HANDS ON WATERSHED EXPLORATION

## Fun filled field trips

Visiting wetlands, spruce bogs and streams with students provides them a hands on opportunity to catch “marsh monsters”, measure water quality and learn about the plants and animals in our Boreal forest. In collaboration with the LSFES we delivered 6 field trips with students in the watershed. We also partnered to host a 3 day Enviro Quest Camp in July for youth ages 11-14.

We don't just visit wetlands and streams! Our friends at Big Lakes County welcomed 3 trips to the Jousard water treatment plant where the students got a hands on look at how drinking water is made and all of the things our water treatment plant operators do to make sure our water is clean and safe for us.



## X-Stream Science



2023 was the second year of the LSWC delivering the X-Stream Science Program to students in the watershed. The program connects students to their watershed through hands-on scientific exploration. X-Stream Science give students a hands-on opportunity to research, investigate, collect and interpret data, to form conclusions on the condition of a waterbody. Students investigate riparian plants, water chemistry and aquatic biodiversity to better understand the health of a water body and water quality overall.



The LSWC & our partners from the Athabasca Watershed Council delivered X-Stream Science six times in the field and twice in the schoolyard to accommodate bus shortages.

Funding provided through the Forest Resource Improvement Program grant.  
Special thanks to:



# ELLIOTT & ROSCHE MEMORIAL BURSARY

The LSWC established the Elliott & Rosche Memorial Bursary in 2021 to honor two of our founding and long serving board members, Brian Elliott and Brian Rosche who have passed on. The \$1,000 Bursary is awarded annually to a student who lives in the Lesser Slave Watershed who is pursuing post secondary education in a science or water related field. Eligible students can partner with the Northern Alberta Development Council (NADC) to access matching funds, doubling the amount of support they receive.



Brian Elliott



Brian Rosche

**A SPECIAL THANK YOU TO ALONA BURGAR FOR HER \$500 DONATION TOWARDS THE BURSARY IN 2023**



*Pictured from left to right: Meghan Payne, Executive Director, Ayla Giroux, Kate Lovsin, Watershed Coordinator.*

In 2023, the LSWC Bursary Committee awarded Ayla Giroux with the \$1,000 bursary to support her education at the University of Alberta for a degree in Conservation Biology.

We look forward to watching her bright future.

**All bursary donations over \$20 are eligible for a Charitable Tax Receipt.  
Contact us at 780-523-9800 to discuss your contribution.**

**Bursary applications are due May 1st annually - if you know a student who is eligible please let them know!**

# STATEMENT OF FINANCIAL POSITION

**LESSER SLAVE WATERSHED COUNCIL**  
**STATEMENT OF REVENUES AND EXPENDITURES**  
**YEAR ENDED MARCH 31, 2024**

	2024	2023
<b>TRADE SALES</b>		
Provincial Operational Grant Income	\$ 320,000	\$ 230,000
Non-Government Grant Income	55,141	135,231
Donation Income	2,290	7,644
Revenue Deferred from Previous Period	381,287	311,686
Revenue Deferred to Subsequent Period	(220,488)	(381,287)
Municipal Government Grant Income	-	25,450
Water Quality Program Income	40,000	29,353
Elliot- Rosche Memorial Donation Income	500	1,248
Other Provincial Grants	1,200	-
Conference Registrtrtion Fees & Sponsorships	-	25,317
	<b>579,930</b>	<b>384,642</b>
<b>EXPENSES</b>		
Administration	1,475	1
Advertising & Printing	3,429	4,777
Amortization	342	185
Bursary Payments	1,000	1,500
Donations	-	750
Education & Outreach Expenses	39,342	29,727
GST Expense	5,160	4,661
Insurance	4,534	4,170
Interest and bank charges	396	166
Meetings and conventions	3,091	25,001
Office	7,409	12,521
Office Rental	18,000	17,200
Phone, Internet & Security	4,718	5,419
Professional fees	3,800	2,500
Project Expenses	161,165	20,940
Salaries and benefits	166,208	199,556
Stakeholder Engagement	19,226	7,179
Training & Professional Development	5,802	4,706
Travel	-	756
Water Quality Monitoring	41,265	40,823
Watershed Planning	-	3,176
Watershed Resiliency Projects	79,234	11,719
	<b>565,596</b>	<b>397,433</b>
<b>EXCESS (DEFICIENCY) OF TRADE SALES OVER EXPENSES FROM OPERATIONS</b>	<b>14,334</b>	<b>(12,791)</b>
OTHER INCOME	<b>280</b>	<b>940</b>
<b>EXCESS (DEFICIENCY) OF TRADE SALES OVER EXPENSES</b>	<b>\$ 14,614</b>	<b>\$ (11,851)</b>

# PARTNERS & FUNDERS

## FINANCIAL SUPPORTERS

Government of Alberta  
Vanderwell Contractors Ltd.  
Big Lakes County  
Tolko Industries  
West Fraser  
Alberta Conservation Association  
Agriculture in the Classroom  
DeSigns by Tam  
Canada Alberta Job Grant  
Town of High Prairie  
Latcia McDonald  
Alona Bargar

## PARTNERS & COLLABORATORS

Lesser Slave Forrest Education Society  
Boreal Centre for Bird Conservation  
MD of Lesser Slave River  
Town of Slave Lake  
Athabasca Watershed Council  
Mighty Peace Watershed Alliance  
ALUS Canada  
Sucker Creek First Nation  
Swan River First Nation  
High Prairie Municipal Library  
Big Lakes County FCSS  
Big Lakes County Water Operators  
Joussard Community Association  
Joussard Volunteer Fire department  
Slave Lake Regional Tourism Society  
Mackenzie DataStream  
Alberta Riparian Web Portal  
Alberta WPAC's  
Alberta Water Council  
Alberta Innotech  
NAIT Boreal



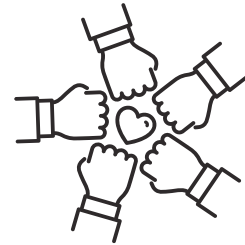
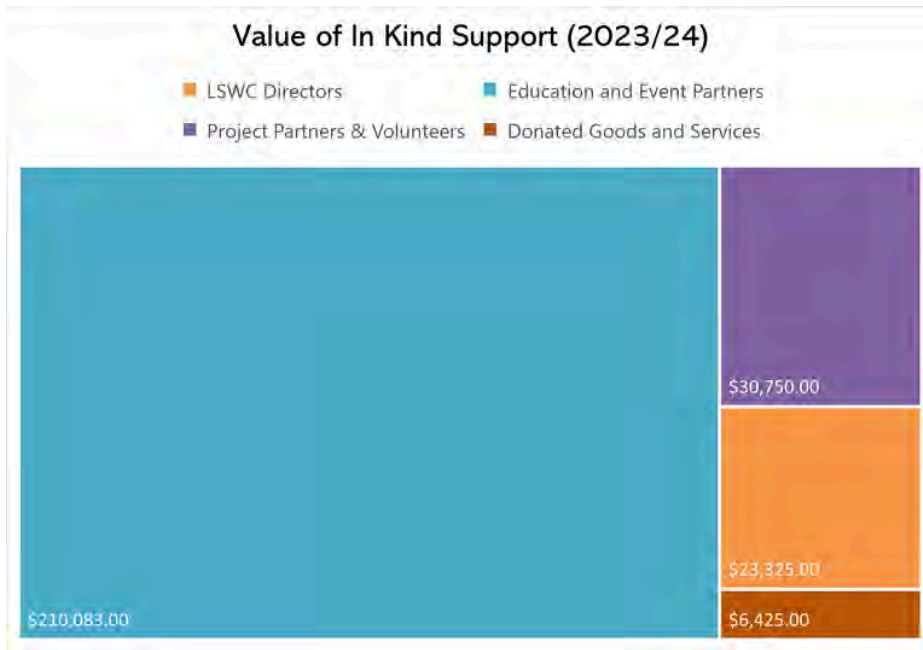
*Shout out to Trevor Sandquist, owner of Pinto Ice Shack Rentals, for his support of our winter Kids Can Catch event in Joussard.*

## EVENT SUPPORTERS

Designs by Tam  
Pinto Ice Shack Rentals  
ATCO High Prairie  
Stingray Radio  
Freson Brothers High Prairie  
Boondocks Grill  
Sunstone Inn B&B  
Tim Hortons  
Barron Oilfield Supply  
Revolution Auto Group  
Kal Tire High Prairie  
Fountain Tire High Prairie  
Peavy Mart  
Glamour and Gear  
A&W High Prairie  
Falcon Rentals  
RMS Electrical Services  
Red Sky  
Park Theatre

# IN KIND SUPPORT

The investment of time that the LSWC Directors, our partners, and volunteers can not go un recognized. The hours of time and travel, donated services, and support on projects, programs and events between April 1, 2023 and March 31, 2024 amount to a cash value of **\$270,583!**



*We ♥ our Volunteers*

*A special shout out to a handful of our wonderful volunteers in action across the watershed*

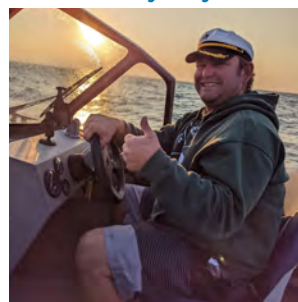
Ian Willier



Tammy Kaleta



Jeremy Payne



Amara Drefs



Keith Denoncourt



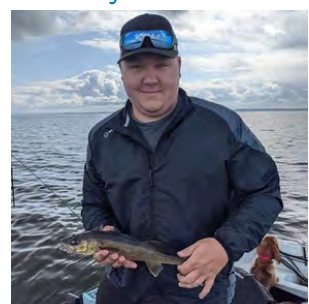
Cori Klassen



Nicole St. Jean



Taylor Hunt







West Prairie River from horseback

Photo by Meghan Payne

CONTACT US:

## LESSER SLAVE WATERSHED COUNCIL

---

Email: [info@lswc.ca](mailto:info@lswc.ca)

Phone: (780) 523-9800

4833 52ave., PO Box 2607

High Prairie, AB. T0G 1E0

Web: [www.lswc.ca](http://www.lswc.ca)

 @LSWC2012   @abLSWC

 Lesser Slave Watershed Council

