

Lesser Slave Watershed Council

Annual Report

April 1, 2015 to March 31, 2016

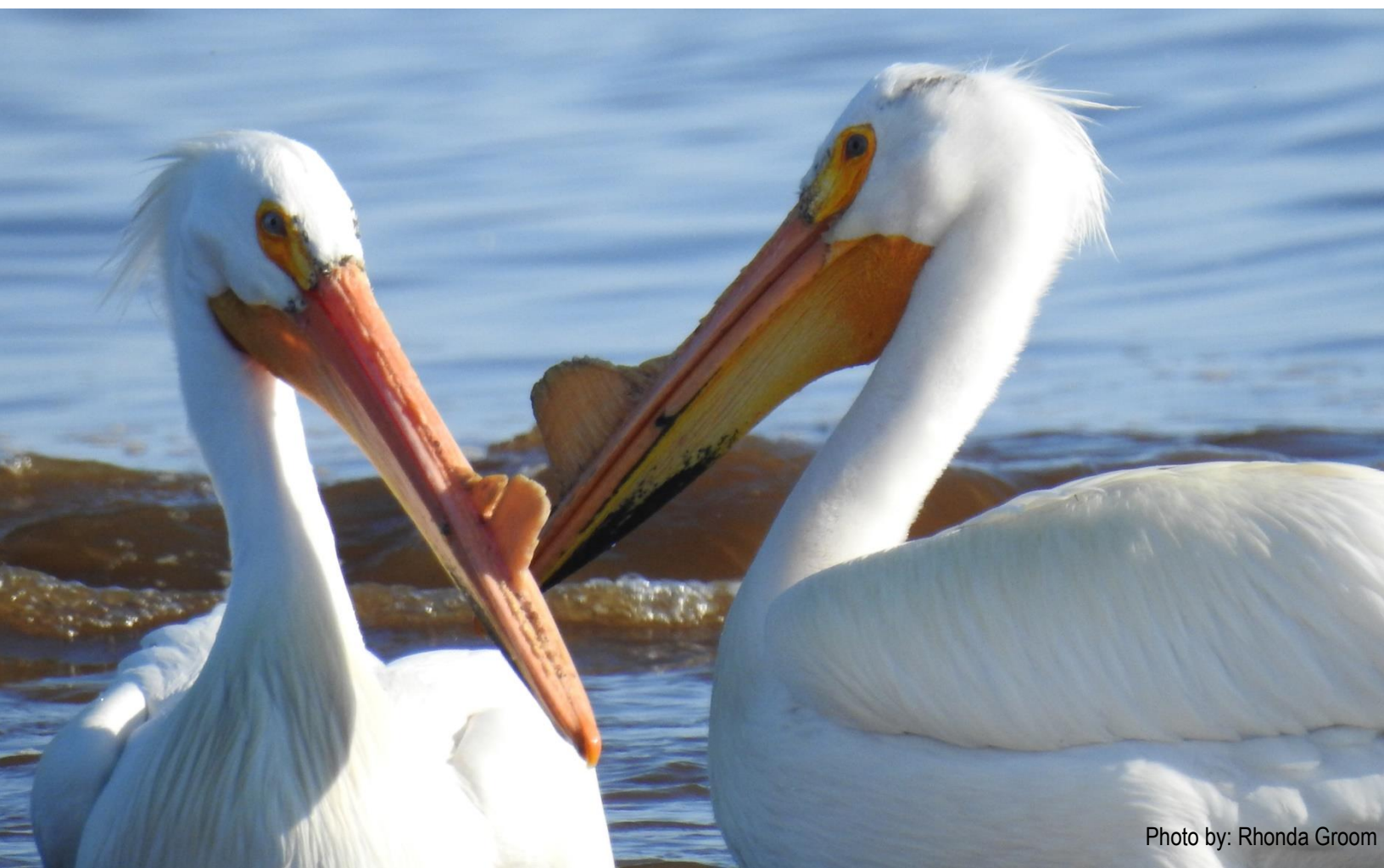


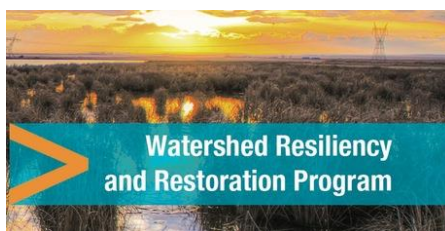
Photo by: Rhonda Groom

A summary of the LSWC's Operations and Projects for the 2015-16 year, information about our Board, and highlights of engagement and stewardship activities.

Prepared for the LSWC by:
Meghan Payne, LSWC Executive Director



Thank You to our 2015-16 Financial Supporters



and our local partners



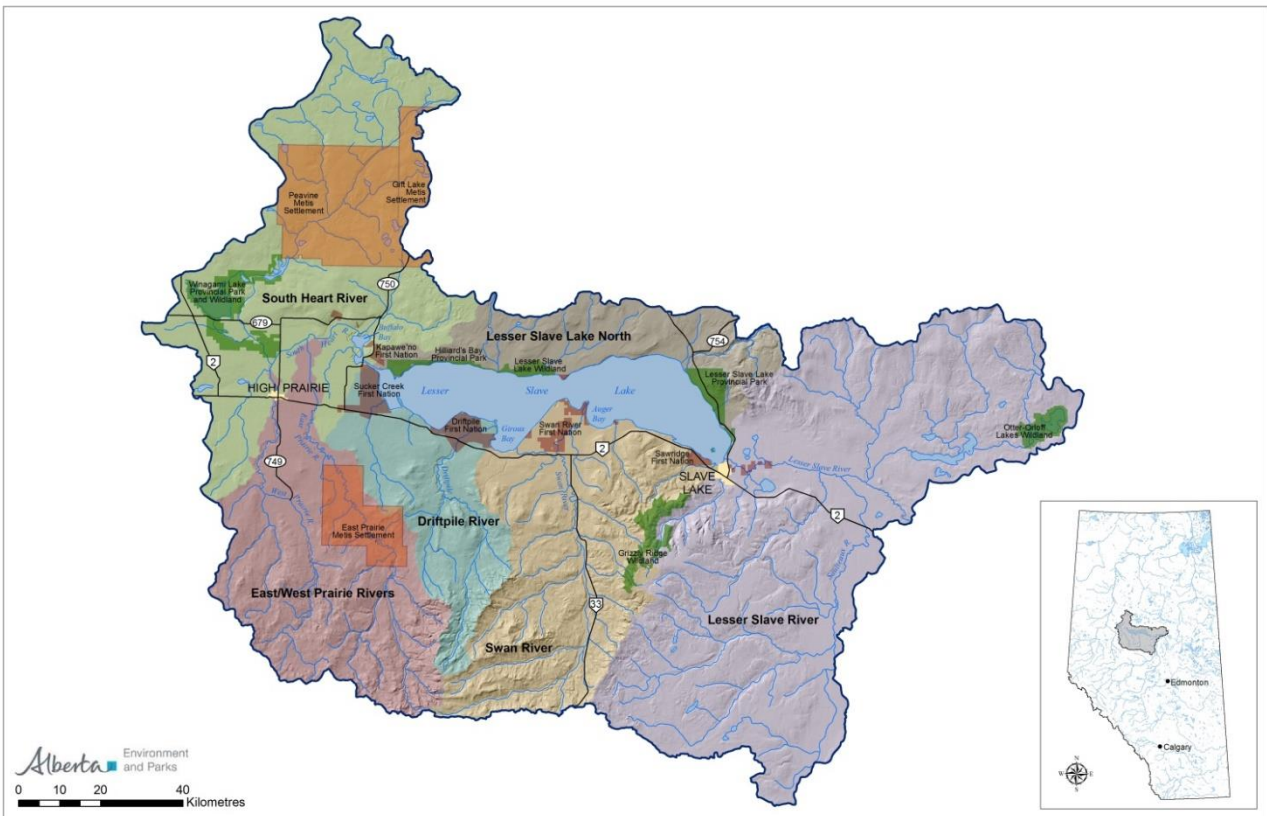
Table of Contents

LSWC Financial Supporters and Partners	Page 1
Table of Contents	Page 2
Map of the Watershed	Page 3
Message from the Chair	Page 4
2015-16 Board of Directors	Page 5
Summary of 2015 Operations	Pages 6-8
Integrated Watershed Management Plan	Page 9-11
Watershed Education with the LSFES	Page 12
Rain Barrels	Page 13
Caring for Our Watersheds	Page 13
Little Green Thumbs	Page 14
Water Management Challenges – Lesser Slave River	Page 15
2015-16 Statement of Financial Position	Page 16
Getting Out in the watershed	Page 17-18



Our lake and watershed are enjoyed year round. Hundreds of ice fishing shacks can be seen across LSL all winter. This amazing paint job was done by our Chair Tammy Kaleta. She and her family are avid fishermen year round.

The Lesser Slave Watershed



The Lesser Slave Watershed is centered around Lesser Slave Lake. Water in our lake comes from several tributaries including the South Heart River, the East and West Prairie Rivers, the Driftpile River, and the Swan River. The Lesser Slave River is the only outlet of Lesser Slave Lake and it flows from the Town of Slave Lake to the Athabasca River about 75km East of Slave Lake where water makes its way north all the way to lake Athabasca and eventually the Arctic Ocean.

Watershed Facts:

- The surface area of Lesser Slave Lake is 1,160km²
- The area of the entire watershed including the lake is 20,110 km²
- The volume of Lesser Slave Lake is 12,380,000,000 m³
- All surface water license holders have a maximum allowable withdrawal of 11,205,000 m³ (this seems big but it is less than 0.001% of the lake volume)
- The ground water licenses in the watershed total 587,600 m³ annually.
- Evaporation can drop our lake level by up to 610mm annually.
- The average rainfall we receive annually is about 470mm.

Message from the Chair

Where does the time go, seems that just last month we had the last AGM and listened to Dr. Dorte Koster talk about the status of our watershed. It was interesting to see the status of the watershed, from the vulnerable status of walleye and pike in Lesser Slave Lake, to the paleolimnolgy showing the onset of mans existence in our area. Concerning trends like increased phosphorus loading were also evident in the data.

I thank you ... all board members for your attendance and involvement. It is integral in the process of how the LSWC does its business that you feel welcomed and are encouraged to ask lots of questions. In the future we hope, locally appointed municipal representatives will be able to provide a spokesperson for a 4 year term to provide continuity. Having had the privilege of visiting First Nations and Métis Settlements first hand, it is nice to know what we are all on the same page when it comes to the health of our watershed. It will be great to welcome them to our Board this year.

I am encouraged; all these different sectors and governments sit around our board table once a month and pin point areas of concern and endeavor to be proactive in planning for and promoting watershed health. It is a privilege to be able to be involved in the local based management of our home and communities watershed health. I am looking forward to the collaboration, great discussions and work on the Integrated Watershed Management Plan for the watershed.

I am very proud of the work Meghan Payne our Executive Director as she continues to complete scheduled work, assist all of us volunteers, governments and contractors to make this organization one of the top run non-profits in our area. Thank you to Kaylyn Jackson for joining our staff in December 2015 and bringing enthusiasm to educational programming that we deliver.

Looking forward, I don't believe everyone has time for Council business but still may want to get involved and promote lake and watershed stewardship. Please contact Kaylyn to see how you too can become part of the Education & Stewardship Committee for the Lesser Slave Watershed Council in 2016-2017.

Tammy Kaleta, LSWC Chair

Meet the LSWC Staff



Meghan Payne, BSc.
Executive Director



Kaylyn Jackson, BA
Watershed Coordinator

2015-16 LSWC Board of Directors

Sector or Organization	Board Member	Alternate Member
Big Lakes County	Robert Nygaard	<i>Ron Matula</i>
MD of Lesser Slave River	Brian Rosche	<i>Brad Pearson</i>
Town of Slave Lake	Stefan Plouffe (Secretary)	<i>Mark Missal</i>
Town of High Prairie	Michael Long (Treasurer)	<i>Brian Panasiuk</i>
First Nations Member at Large	Edna Willier	<i>vacant</i>
Alberta Environment and Parks	Jamie Bruha	<i>Lisa Bergen</i>
Métis Member at Large	<i>vacant</i>	<i>vacant</i>
Tourism and Recreation	Tammy Kaleta (Chair)	<i>Jim Meldrum</i>
Oil and Gas Industry	Bob Popick (Vice Chair)	<i>vacant</i>
Cottage and Cabin Owners	Shane Knutson	<i>Brian Elliott</i>
Agriculture	Claude Smith	<i>Lorne Pratt</i>
Forest Industry	Todd Bailey	<i>George Gross</i>
Environmental Non Government Organizations	Vacant	<i>Vacant</i>
Commercial Fishermen	Murray DeAlexandra	<i>vacant</i>
Member at Large	Tony McWhannel	<i>Bob Jackle</i>
Trappers	Scott Mayston	<i>Vacant</i>

The Lesser Slave Watershed Council is a nonprofit (2007), charitable organization (2010) governed by a Board of Directors. The directors are responsible for the oversight and success of the organization. The Directors, while representing a sector or organization, are individually accountable to the LSWC organization. The Directors provide governance and strategic oversight to the Staff while bringing their experiences and knowledge of the watershed to the table making for well-rounded inclusive discussion. Throughout the 2015-16 year the LSWC had much discussion about how we can better engage with Aboriginal people in our watershed both at the board level and in the development of our integrated watershed management plan.

Summary of Operations

From April 1, 2015 to March 31, 2016 the LSWC board and staff worked to implement our operational plan and meet our strategic goals. Below is a summary of accomplishments and activities from the last year as they relate to our four strategic goals.

Goal 1. Establish an ongoing collaborative planning and management framework for the Lesser Slave Watershed.

- LSWC Board of Directors approved the Integrated Watershed Management Plan terms of reference document and submitted it to Alberta Environment and Parks for review and endorsement.
- IWMP Steering committee sent out over 100 engagement packages to stakeholders around the watershed. These included our IWMP brochure, 5 different fact sheets about various land use impacts, the summary document of the 2015 Technical Report for the watershed, and a copy of the IWMP Terms of Reference.
- The IWMP Steering Committee worked with Alan Dolan to develop a specific communication and engagement plan for the upcoming year that outlines how and when we will seek and incorporate feedback into the IWMP process.
- The IWMP Steering Committee established a Terms of Reference for the Technical Advisory committee and sent letters requesting participation to desired team members.
- The LSWC Executive Director and Chair met with Peavine and East Prairie Metis Settlements at their offices to talk about the watershed, their issues and concerns and how they would like to be involved in the watershed planning process.
- The LSWC Chair, Executive Director and Alan Dolan met with 2 of the 5 First Nations around the lake to introduce the LSWC, the watershed plan, and to learn about how we can engage and include First Nations in watershed planning and protection.

- LSWC Executive Director participated in local government meetings set up by Environment and Parks staff with the goal of encouraging collaborative lake management planning.

Goal 2. Facilitate watershed research that addresses issues and enables management actions within the watershed.

- The LSWC distributed over 250 copies of the 2015 Technical Report summary document throughout the year, sharing the most current watershed information with people in the basin.
- The LSWC has engaged with Alberta WaterSMART and appointed Executive Director Meghan Payne to sit on the Athabasca River Basin Initiative Project's working group. This project will explore how water management decisions will impact the water quality and quantity in the Athabasca River Basin and inform decision makers in various jurisdictions.
- Dr. Dorte Koster of Hutchinson environmental Science Ltd. Joined the LSWC at their June 2015 Annual General Meeting to share the results and findings of the Technical report with the group and provided a copy of her presentation for the LSWC to use.

Goal 3. Promote watershed awareness and literacy through education, outreach and stewardship programs.

- The LSWC provided \$10,000 in funding as well as staff resources to support our ongoing partnership with the Lesser Slave Forest Education Society.

Continued.....

- The Little Green Thumbs Program, supported by Agriculture in the Classroom Saskatchewan, grew to include nine classroom gardens this year.
- The LSWC partnered with non profit rainbarrel.ca to sell and distribute rain barrels made from recycled poly drums in our watershed. We sold a total of 183 rain barrels in 2015.
- The LSWC continues to work with the Big Lakes County Agricultural Service Board to promote environmental stewardship across our watershed through projects and educational opportunities.
- The LSWC participated in trade and sportsman shows around the watershed. We engaged with 495 people at the High Prairie Gun and Sportsman Show, 354 people at the Slave Lake Chamber of Commerce Trade Show, and 303 people at the fall 2015 Slave Lake Gun Show.
- In the spring of 2015 the LSWC delivered the Land Stewardship Center of Alberta's Green Acreage Guide workshops in High Prairie and Slave Lake in partnership with our local Agricultural Fieldmen. We had 16 participants in High Prairie and 17 at our Slave Lake event.
- The LSWC received a Watershed Restoration and Resiliency Grant for \$12,500 to start planning and delivering wetland and riparian enhancement projects in the watershed. The LSWC is working with Peace Country Beef and Forage Association, Cows and Fish and our County to deliver these projects.
- The LSWC's Watershed Coordinator attended Alberta EcoTrust's first Environmental Gathering on climate change where there were many networking opportunities and information about projects around Alberta.
- LSWC Staff visited local junior high classes to talk about the watershed and to promote Agrium's Caring for our Watershed program and competition.
- The LSWC is growing our popularity on Social Media. At the end of the fiscal year we had 244 Facebook "likes" and 498 followers on twitter.
- The LSWC celebrated water in June 2015 by hosting a community BBQ with the folks from the High Prairie RBC branch on RBC's Blue Water Day.
- On Earth day 2015 the LSWC delivered our first Webinar titled "watershed 101" in partnership with the Lesser Slave Forest Education Society and hosted by Northern Lakes College. 18 people logged in to learn about watersheds.
- The LSWC held its 8th Annual General Meeting in June 2015 and 30 people joined us at the Peavine Inn in High Prairie.
- The LSWC staff engaged with people around the Lesser Slave Lake during our lakeshore visits to local boat launches and campgrounds. We distributed Stewardship Handbooks, Aquatic Invasive Species information and Respect Our Lake resources.
- LSWC Watershed Coordinator participated in the Northlands School Division regional science fair at Peavine School as a guest judge.
- The LSWC completed the design of the Watershed Wise educational board as well as detailed lesson plans for delivery. This educational tool is used to show how various land uses have an impact on our watershed and demonstrate that by implementing best management practices we can reduce our impact on the watershed.
- LSWC Executive Director and Watershed Coordinator attended the fall 2015 Alberta Lake Management Society's annual workshop in Stony Plain, AB.



Continued.....

- In March 2016 the LSC created ice fishing awareness materials and with the help of volunteers distributed 360 copies to ice fishermen and ice fishing tournaments around Lesser Slave Lake.
- The LSWC provided Lake Stewardship Handbooks to the Slave Lake Anglers Cup tournament to be included in registration packages.
- The LSWC joined the Water North Coalition as a non-voting member. The LSWC Staff are participating on the “public education” subcommittee as it aligns with our education and outreach goals.

Goal 4. Establish a strong operational model in which the LSWC is sustainable, has clear governance, capacity and funding.

- LSWC’s staff and four of the Board attended the January 2016 Environment and Parks led WPAC forum in Leduc, AB.
- LSWC Executive Director visited the Athabasca WPAC at a board meeting to share updates about the LSWC and to talk about potential collaborative projects.
- The LSWC held 9 regular meetings of the board and an annual general meeting in the last fiscal year.
- LSWC Watershed Coordinator attended Little Green Thumb program coordinator training in Calgary, AB to gain the skills and knowledge to deliver the program locally.
- Executive Director completed an online course offered by McGill University titled *Integrated and Adaptive Water Resource Planning, Management and Governance*.
- LSWC Executive Director participated in a First Nations consultation and engagement workshop offered in Slave Lake.
- LSWC Executive Director completed all grant and financial reporting throughout the year as required by our funders.

- LSWC’s Watershed Coordinator attended the provincial education and outreach staff gathering to work on collaborative WPAC education initiatives and learn the successes of the other WPAC’s.
- The LSWC Board of Directors reviewed and approved the 2016-17 operational plan and budget prior to the February 2, 2016 Environment and Parks grant application deadline.
- LSWC Society Annual Return and Canadian charitable Annual return were completed for the fiscal year.
- 3 local governments contributed a total of \$15,000 to the LSWC and we received \$15,000 from Big Lakes County’s Ag. Service Board Environmental Stream funding.
- Executive Director attended quarterly WPAC manager meetings to address provincial scale collaborative opportunities and discuss common challenges.

Alberta WPACs



The eleven Watershed Planning and Advisory Council’s in Alberta are provincial *Water for Life* partners and also work together collaboratively to tackle provincial scale watershed issues, and develop WPAC education and outreach programs for delivery across Alberta.

Learn more at: www.albertawpacs.ca

Developing an Integrated Watershed Management Plan For the Lesser Slave Watershed

The Lesser Slave Watershed Council, along with the other 10 Watershed Planning and Advisory Council's in Alberta are tasked with the development of integrated watershed management plans for their respective basins around the province. A WPAC plan is not a legal document; rather it makes watershed management recommendations to the provincial, local and Aboriginal governments and stakeholders in the watershed who have jurisdiction to make policy and operational changes that will sustain lake and watershed health.

The development of the watershed management plan is overseen by the project Steering Committee. Their role is to provide oversight and direction to the project manager and consultants and to report back to the LSWC Board of Directors. The Steering Committee is aided and supported by the IWMP Technical Advisory Committee (TAC). This is a group of subject specific experts who will provide input to the contractors, project manager and steering committee related to their areas of expertise. The TAC includes a limnologist, hydrologist, planner, riparian specialist, GIS specialist, conservation groups, fisheries biologist and other experts as required.

Five watershed management themes have been identified based on the issues and management challenges identified by stakeholders, the public, and through scientific work.

Theme	Outcome	Objective
Water Quality	Water quality supports communities, aquatic ecosystems, recreation, wildlife and economic opportunities.	Maintain or improve water quality in Lesser Slave Lake and its tributaries.
Water Quantity	Surface and ground water are managed in a way that supports communities, aquatic ecosystems, recreation, wildlife and economic opportunities.	Recommend water conservation strategies that promote effective use of water.
Biodiversity	Sustainable land use practices take place in the watershed that maintain and support biodiversity.	Recommend best management practices for land use that will conserve and enhance biodiversity in the watershed.
Social and Economic Values	A healthy watershed that will provide recreational and economic opportunities.	Promote a stewardship ethic among watershed residents and users. Recommend the development of a lakeshore management plan to guide sustainable development around Lesser Slave Lake.
Riparian Areas and Wetlands	Healthy riparian areas stabilize banks and shorelines, improve water quality, reduce sedimentation, provide habitat and promote biodiversity.	Recommend strategies to restore and protect riparian areas in the watershed.
	Wetlands are kept intact to provide flood and drought mitigation, improved water quality and habitat.	Recommend wetland conservation strategies that are in line with Alberta's wetland policy and promote wetland and riparian education and stewardship.

Watershed Planning - Communication and Engagement

The watershed plan needs to reflect the values of the people and communities in our watershed. Therefore it is very important to ensure we have heard the voices and concerns of people who live work and play in our basin.

The LSWC identified several objectives around communication and engagement with stakeholders throughout the development of the watershed management plan.

1. Clarify the roles and responsibilities of the various players — the LSWC, the provincial government, stakeholders, First Nations and Métis communities
2. Ensure everyone understands what an integrated watershed management plan is, why it important, and how they are contributing to it
3. Seek stakeholder advice and input at critical junctures in the development of the IWMP using tools that are most appropriate to LSWC's needs
4. In particular, seek input from key stakeholders who will be implementing the IWMP, such as local governments and certain ministries of the Government of Alberta
5. Identify areas where stakeholders require more information
6. Provide opportunities for everyone to be heard
7. Evaluate the process so future engagement can better meet participants' and LSWC's needs

In fall of 2015 the LSWC worked with Alan Dolan and Associates to host stakeholder workshops in High Prairie and Slave Lake. These were well attended by a good representation of the various stakeholder groups in the watershed and the group talked about solutions to watershed management challenges as well as what is already being done by the various sectors.



LSWC Executive Director Meghan Payne gives an update about the watershed planning process to the group of participants at the Slave lake Stakeholder workshop in November 2015.

The LSWC has also developed objectives for communicating and engaging with the five First Nations and two Metis Settlements in our watershed:

1. Build a relationship between Métis and First Nation communities and the Watershed Council
2. Hear the voices of Métis and First Nations — their history, culture and involvement in the watershed
3. Share information on the Watershed Council, what it is and what it does
4. Have conversations about watershed planning

Throughout the winter of 2016-16 LSWC Executive Director and Chair met with two local First Nations and two Metis Settlements. Aboriginal people in our watershed have a connection to the land and the water and we want to make sure that we hear their voices, their concerns, and their ideas for solving some of our watershed issues. The LSWC will continue to visit the Aboriginal communities in the watershed and ensure that they are engaged in our watershed plan.

In the next year the LSWC will hire a Watershed planner to author our watershed management plan. A communication and engagement professional will work with to ensure that we are adequately communicating and engaging with the key folks in the watershed so that the plan will be supported and successful.



From left to right: a gravel pit, oil extraction and forestry, lakeshore development, a sewage lagoon and agriculture. . These are all things that impact our watershed health. The IWMP will make recommendations for sustainable management practices.

To learn more about the planning work that has taken place or what is taking place in the next year please visit our web page: www.lswc.ca and click the watershed planning tab.



Lesser Slave Forest Education Society

The Lesser Slave Watershed Council and the Lesser Slave Forest Education Society (LSFES) have been working together to deliver environmental watershed based education to students and the public since 2009.

In 2015 the LSWC was glad to be able to present the LSFES with a \$10,000 donation to support programming in the watershed. LSWC staff were happy to aid as guest instructors for “Marsh Monsters” and water quality testing throughout May and June 2015. The LSFES delivers programming to all of the schools in our watershed as well as summer camps and online webinars from time to time. 2015 was the first year that the groups worked together to deliver the Watershed 101 webinar from Northern Lakes College on Earth Day, April 22.



Grade 3 and 5 students become experts on fresh water life cycles and aquatic invertebrates after examining the various “marsh monsters” they find in local water bodies.



In 2015 the LSFES and LSWC delivered 78 watershed, wetland, or freshwater ecosystem presentations, reaching a total of 1474 participants.



LSWC Executive Director Meghan Payne explains water quality testing kits to a group of Grade 5 Citizen Scientists. The students test temperature, turbidity, pH levels and dissolved oxygen and determine the health of their waterbody.

Rain Barrels - Conserving water and raising funds for the LSWC

In the spring of 2015 the LSWC partnered with a Canadian nonprofit, rainbarrel.ca to offer 55 gallon recycled poly rain barrels for sale to people in our watershed. We sold a total of 183 rain barrels between High Prairie and Slave Lake and were able to keep \$10 from each sale to support the LSWC. Rain barrels were distributed to customers with information materials about home and garden water efficiency and maintaining your rain barrel.



L to R: Meghan Payne, Megan Graham and Tammy Kaleta, LSWC Chair pose with some rain barrels at our High Prairie pick up location.



Caring for Our Watersheds

The Caring for Our Watershed program is an environmental education competition aimed at students in grades 7-12. Funded by Agrium the competition asks students "What can you do to improve your watershed?". Students are then encouraged to use their creativity and take a closer look at their local watershed to identify issues along with a possible solution. The program rewards the students and the schools who submit the most creative, thought-provoking and innovative ideas.

We are working towards expanding the reach of this program in our watershed for the 2016/2017 year. This year we partnered with St. Andrews



school and presented an introduction to the competition as well as information on the Lesser Slave Watershed to two of their science classes; which resulted in one group of students creating a proposal and entering the competition. We have been in contact with multiple other schools regarding working with their science teachers to bring the program into their classes in the coming school year. As part of our expansion plans we partnered with Agrium to produce a three minute long "Where is Your Watershed" video that explains the Lesser Slave Watershed in a fun, animated and easy to understand way.

The video can be viewed on our website: www.lswc.ca/projects/education-and-outreach/

Little Green Thumbs



Through an ongoing partnership with Agriculture in the Classroom Saskatchewan and funding provided by Ag for Life, the LSWC was able to continue providing the Little Green Thumbs Program. This year we were excited to add another new garden to the program, bringing us up to nine classroom gardens in our watershed. These gardens are in kindergarten to grade four classes everywhere from Peavine to Slave Lake.

Little Green Thumbs is an indoor gardening program that gives participating schools and classrooms the opportunity to grow and harvest fruits, vegetables and herbs in their classroom year round.

As part of the process students work together and care for their gardens while also learning about agriculture, environmental stewardship, nutrition, sustainable food systems and much more.

Our Watershed Coordinator Kaylyn Jackson works closely with the participating classrooms to support teachers and provide educational resources and supplies. Teachers are also encouraged to host year end activities and celebrations to recognize their hard work and showcase what the students have learned. This year many schools visited Christie's Greenhouse as part of the program and/or for their yearend celebration.



Students from High Prairie Elementary School enjoyed planting pumpkin seeds at Christie's Greenhouse during a field trip. Christie's Greenhouse is an awesome community Little Green Thumbs Supporter

Lesser Slave River – Water Management Challenges

The Lesser Slave Watershed Council made recommendations around the weir and managing flow in the Lesser Slave River in the Lesser Slave River Water Management Plan in 2010. The LSWC and downstream stakeholders have been eagerly anticipating the completion of this work by Alberta Environment and Parks and Alberta Transportation so that the minimum flow of 6 cubic meters per second can be maintained in the Lesser Slave River at all times.

The intended objectives of the weir modification project were:

- To provide minimum flow of 6³ m³/s at the 575.5 m (weir crest elevation) to the Lesser Slave River at all times.
- Not impact the lake level in high flow events, no change of existing flood level
- To not interfere with fish passage
- Avoid requirement for future syphoning over the weir which is costly and unsafe.



When the lake level drops below weir height, like in this 1999 picture, water ceases to flow in the Lesser Slave River, causing immediate negative impacts.

In winter of 2016 the weir modification to provide minimum downstream flow was completed. The work included the damming off of part of the river to keep water away from the work area, then removing part of the cement and metal weir. A movable gate in its own frame was placed into the opening and sealed. When the lake levels drops below weir height the gate is opened to release 6cms of flow and when the lake level rises again the gate is closed and the weir functions normally. If the gate were to be left open for 180 days straight (which is very unlikely) the lake level would drop by 10cm. We lose about 23cm of lake level to evaporation each year and all of the water users in the basin take enough water to drop the lake by 1cm.

The gate in the weir is located between the right (north) bank and the fish ladder. In this picture the gate is closed and the weir is functioning normally. The gate is managed and operated by Alberta Environment and parks.



Financial Statement

Statement of Revenue and Expenditures from April 1, 2015 to March 31, 2016

(*unaudited*) prepared by Bobby and Associates. More detailed financial information can be obtained from the LSWC Executive Director upon request.

	2016	2015
REVENUE		
Government grant income	\$142,500	\$268,270
Non government grants	\$58,356	\$51,916
Donation income	\$100	\$4,968
Revenue deferred from previous period	\$93,373	\$76,396
Revenue deferred to subsequent period	(\$64,900)	(\$93,373)
	<u>\$229,429</u>	<u>\$308,177</u>
EXPENSES		
Advertising and promotion	\$16,056	\$9,842
Amortization	\$644	\$435
Donations	\$10,000	\$12,000
Insurance	\$3,887	\$3,874
Interest and bank charges	\$83	\$78
Office	\$6,027	\$6,769
Project expenses	\$91,610	\$109,672
Administration	\$1,200	\$1,299
GST expense	\$3,444	\$3,645
Professional fees	\$2,015	\$2,812
Rental	\$11,406	\$11,768
Repairs and maintenance	\$75	\$263
Wages and		
Benefits	\$131,931	\$144,761
Telephone, internet, fax	\$4,804	\$4,396
Professional development	\$1,273	\$5,066
Travel	\$16,415	\$18,197
	<u>\$300,870</u>	<u>\$334,878</u>
DEFICIENCY OF TRADE SALES OVER EXPENSES	<u>\$ (71,441)</u>	<u>\$ (26,700)</u>

Getting out in the Watershed



Watershed Coordinator Megan Graham is set up at the Jousard harbor to engage with lake users and provide them with watershed resources.



Local Fisheries Biologist Myles Brown, MDLSR's CAO Alan Winarski, and the pilot prepare to take off on a flight along the south shore of Lesser Slave Lake in June 2015.



In the fall of 2015 the LSWC solar and wind powered watering system was on demo with a producer along the South Heart River. Systems like this are a cost effective and low maintenance way to provide off stream water sources for livestock.



Pictured above is the lakeshore community of Canyon Creek. The south shore of Lesser Slave Lake is experiencing great pressure for development, leaving less and less of the shoreline in a healthy natural state to provide habitat and natural services like water filtration and bank stabilization.





LSWC Board member Todd Bailey (right) and LSWC Volunteer JD Dennis (Left) engaged with fellow watershed enthusiasts at the Fall 2015 Slave Lake Gun Show.



LSWC Executive Director Meghan Payne (left) and watershed Coordinator Kaylyn Jackson (right) pose with some of the resources available at our Riparian open house in Feb 2016.



Fellow LSFES instructor Susie VanDer Vaart leads a group of Biology 20 students out into the march to collect samples. Based on the presence or absence of various species we can learn about the health of a water body.



A young watershed resident was very impressed with our Watershed Wise board at the Slave Lake Gun Show. He learned all about how the different activities that take place on the landscape can have an effect on our lakes and streams.



Lesser Slave Lake sunset at Jousard, AB

Photo by: Kelsey Cox

Lesser Slave Watershed Council

PO Box 2607, High Prairie, AB T0G 1E0

Phone: (780) 523 9800 Email: info@lswc.ca

Web page: www.lswc.ca

Twitter: [@abLSWC](https://twitter.com/abLSWC) Facebook: [LSWC2012](https://www.facebook.com/LSWC2012)